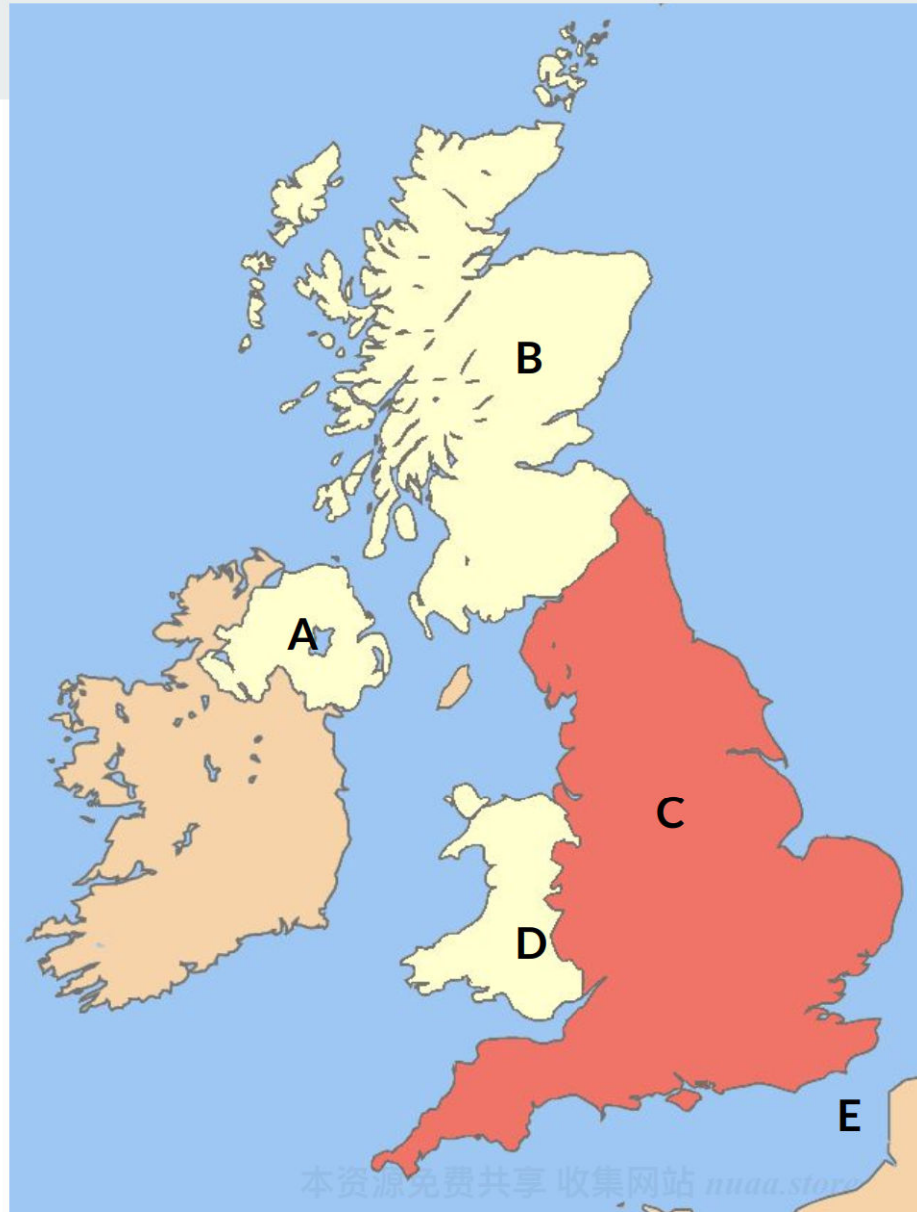




# BAC Exam Practice

Spring 2023

# UK Map Quiz



- A.
- B.
- C.
- D.
- E.



## UK Countries and Capitals

1. \_\_\_\_\_, England
2. \_\_\_\_\_, Northern Ireland
3. \_\_\_\_\_, Scotland
4. \_\_\_\_\_, Wales

# Name these Features

This 200+ mile river runs through London \_\_\_\_\_



This is the largest lake in North Ireland \_\_\_\_\_.







# UK Climate

What type of climate does the UK have?

- a. Arctic climate    b. Subtropical climate    c. Maritime climate    d. Coastal Upland climate

What are some characteristics of this climate? \_\_\_\_\_

What causes this type of climate? \_\_\_\_\_

## Stages of British Union



The Act of Union 1535 legally incorporated \_\_\_\_\_ with England.

The Act of Union, 1707 marks the political union of the Kingdom of England and \_\_\_\_\_ into a united kingdom called “Great Britain”.

The Act of Union 1801 united England and \_\_\_\_\_.

# Important British Historical Events



Identify these historical events:

1. The English Reformation
2. WWII
3. The Glorious Revolution / Bloodless Revolution
4. The Norman Conquest
5. The Seven Years War

- A. Britain was an Allied Power in this event. Following this event, the British economy rapidly declined and Great Britain's role as a global and imperial leader was reduced.
- B. This event linked England to France, introduced the French language, the Feudal system, and castle building technology to England.
- C. This event reduced the power of the Monarchy, forcing the king to submit to the power of Parliament.
- D. The United Kingdom's victory in 1763 resulted in the global dominance of the British Empire.
- E. This event officially separated England from the Roman Catholic Church and established the Church of England (Protestant).

# Who are these individuals?



# The British Monarchy



1. Which is not a modern duty of the British sovereign?

- A. Meeting with foreign heads of state
- B. Approving the new prime minister
- C. Attending significant cultural, scientific, and charitable events
- D. Writing new laws

2. True or False: Today, the role of the British Monarchy is mostly symbolic.

# British Law

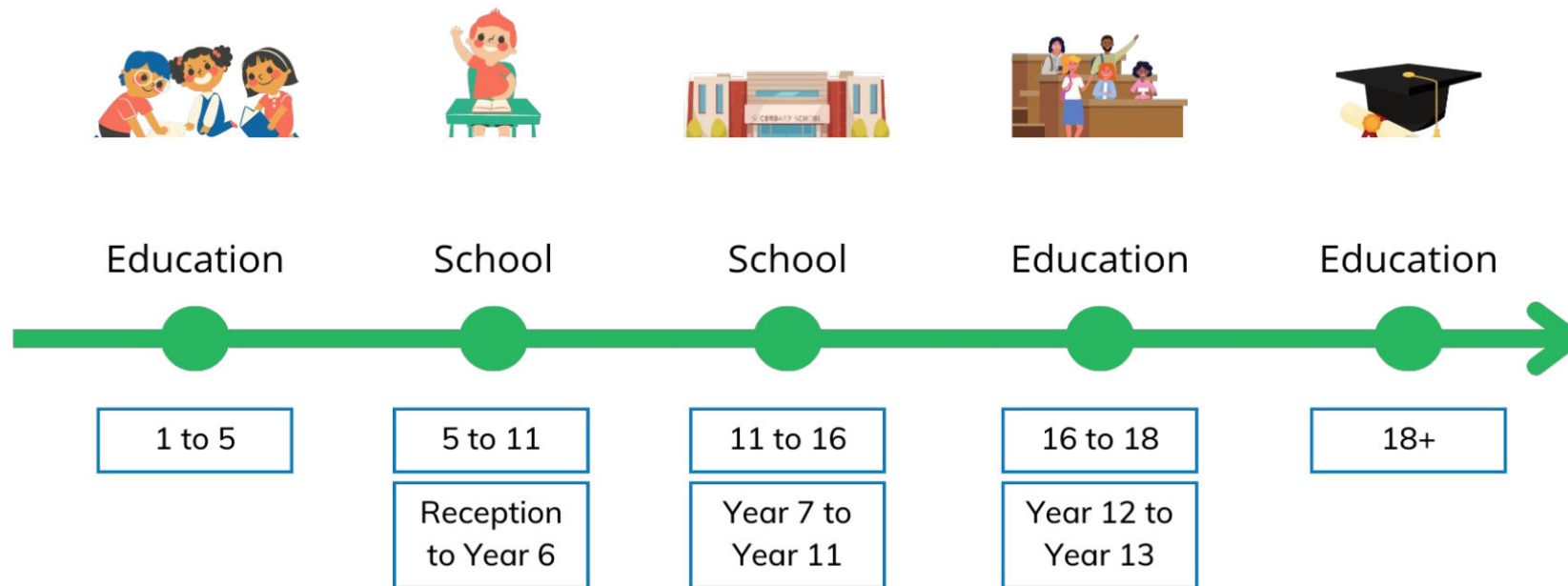


1. \_\_\_\_\_ is the result of various local customs and court decisions forming into a single legal body of principles.
2. \_\_\_\_\_ is a supplementary means used to deal with cases not covered by \_\_\_\_\_. For instance, cases that are concerned with moral problems or civil disputes, such as contracts or debts.



# British Education

2. Identify the different stages of Education in Great Britain:



# British Education



1. A public school is Great Britain:
  - A. Is free of charge and open to the public
  - B. Funded by the government
  - C. Academically selective and expensive
  - D. Is only for children aged 4-6

# British Economy

---

1. Who was Margaret Thatcher?  
\_\_\_\_\_
2. What was the British Disease?  
\_\_\_\_\_
3. Which is not a characteristic of Thatcherism?
  - A. Increased social welfare
  - B. British nationalism
  - C. Deregulation and free markets
  - D. Privatization of state-owned companies



# Tabloid or Broadsheet?



TERROR FEAR: Cameron

## Cam gets shoved in the street

DAVID Cameron was shoved in the street in a shocking security blunder. Dean Parley, 28, mistook he was only out jogging when he accidentally collided with the PM.

Full story: Page 2

AVFC  
QPR.....2  
A VILLA...0  
Match report: STARSPORT



HUNT: Missing Madeleine

## Maddie's suspect in disguise

A PARIKOPHILIC who is to be quizzed over Madeleine McCann posed as a retired Royal Navy officer. Rodrick Mousalimas, 76, was finally arrested in Malta.

Full story: Page 16

# BRITAIN'S FATTEST WOMAN ATE FRIDGE & DIED

EXCLUSIVE

BRITAIN'S fattest woman died weighing 40 stone after eating her own fridge.

Bronda Davies crammed it with her favourite snacks and fizzy pop and moved it next to her bed so it was easier for her to gorge on 6,000 calories a day. Doctors warned her to 'lose weight or die' but she confessed: 'Food is an addiction I can't fight.'

Full story: Page 9

6,000 calories a day from stash next to bed

## Labour won't win, says top union backer

Party will be doing well to win 200 seats at election, McCluskey claims

Barbara Mason  
Amolika Anthony

Jeremy Corbyn's biggest trade union backer has said he does not believe Labour will win the next election. He said he would not vote for the party's leader at the next election, although that would be the party's worst result since 1997.

The comments by Len McCluskey, the general secretary of Unite, overshadowed the launch of Labour's election manifesto yesterday, which set out a raft of spending pledges and higher rates of tax for those earning over £10,000 and £17,500.

The union leader blasted a hostile media for the way of the talk of turning around the Labour leader's image in the months of voters, but said Corbyn will have succeeded even if he wins slightly fewer seats than the 2015 party held in the last parliament.

"Believe that if Labour can hold on to its mandate, it will be a successful campaign," McCluskey said in an interview with the BBC website.

"It will mean that Theresa May will have had a election, but will have retained her majority but not dominantly."

Corbyn has suggested he may want to carry on as Labour leader if he loses the election, but support from his backers could fall away if there are heavy losses. The party won 270 seats in 2015, its worst since 1992, and lost a vote.

Victory was unlikely, McCluskey said. He also said that "Labour's policies will make Britain a better and more equal society", but added: "The scale of the task is immense. People like me are always optimistic - things can happen."

"I don't see Labour always. It's not the case," he said.

Labour's manifesto focused on the party's cutting of the public sector because many of its other headlines with an aim of maintaining had been linked to the media last week - and proposed new measures on health.

Under Labour, those earning more than £100,000 would pay the eye rate, with a new higher band of top earners at work.

McCluskey said that the party could expect to win 200 seats at the next election, but that it would be a success if it won 200 seats.

McCluskey said that the party could expect to win 200 seats at the next election, but that it would be a success if it won 200 seats.

McCluskey said that the party could expect to win 200 seats at the next election, but that it would be a success if it won 200 seats.

## 'I wanted to have my say. I just came out with it'

Why Kathy Mohan had to confront the prime minister



Kathy Mohan, pictured yesterday, challenged Theresa May over disability benefits cuts. The prime minister had banned a rare encounter with the public while campaigning in Abingdon, Oxfordshire, on Monday. Photograph: Ben Gurr for the Guardian

Alexandra Topping

Kathy Mohan didn't know Theresa May was coming to her Oxfordshire hometown on Monday but when she saw the prime minister walking around Abingdon, she decided she had to make herself heard.

"When I saw her, she didn't want to talk to anyone who was up her street," Mohan told the Guardian. "But I got to them, I wanted to have my say. I just came out with it, I said I have learning disabilities and I want to know what other people I want what people are going through. I know that people are being treated."

Mohan, who has struggled with her mental health and has a long-term personality disorder as well as mild learning difficulties, told the Conservative leader that she was struggling to cope after her long-term disability benefits cut.

She didn't expect to become an overnight champion of disabled people, many of whom have seen their support slashed since the Conservatives replaced the Labour long-standing disability benefits cuts.

Mohan said she had been told that she was not going to be treated as a priority. She said she had been told that she was not going to be treated as a priority.

Mohan said she had been told that she was not going to be treated as a priority. She said she had been told that she was not going to be treated as a priority.

Mohan said she had been told that she was not going to be treated as a priority. She said she had been told that she was not going to be treated as a priority.

Mohan said she had been told that she was not going to be treated as a priority. She said she had been told that she was not going to be treated as a priority.

Mohan said she had been told that she was not going to be treated as a priority. She said she had been told that she was not going to be treated as a priority.

## 'Healthy' obese people still at high risk, say scientists

Sarah Bromley Paris

The idea that it is possible to be "fit but fat" has been undermined by a large-scale study that suggests people who are obese and fit are at a higher risk of heart failure and other serious health conditions than people who are obese and not fit.

Researchers from the University of Birmingham examined electronic health records from 1975 to 2012 in the British Biobank network - a large UK-based study of health and disease. They found that for 1.5 million people who were obese and fit, the risk of heart failure was 35% higher than for those who were obese and not fit.

Researchers from the University of Birmingham examined electronic health records from 1975 to 2012 in the British Biobank network - a large UK-based study of health and disease. They found that for 1.5 million people who were obese and fit, the risk of heart failure was 35% higher than for those who were obese and not fit.

Researchers from the University of Birmingham examined electronic health records from 1975 to 2012 in the British Biobank network - a large UK-based study of health and disease. They found that for 1.5 million people who were obese and fit, the risk of heart failure was 35% higher than for those who were obese and not fit.

Researchers from the University of Birmingham examined electronic health records from 1975 to 2012 in the British Biobank network - a large UK-based study of health and disease. They found that for 1.5 million people who were obese and fit, the risk of heart failure was 35% higher than for those who were obese and not fit.

Researchers from the University of Birmingham examined electronic health records from 1975 to 2012 in the British Biobank network - a large UK-based study of health and disease. They found that for 1.5 million people who were obese and fit, the risk of heart failure was 35% higher than for those who were obese and not fit.

Researchers from the University of Birmingham examined electronic health records from 1975 to 2012 in the British Biobank network - a large UK-based study of health and disease. They found that for 1.5 million people who were obese and fit, the risk of heart failure was 35% higher than for those who were obese and not fit.

## British Media

1. What is so significant about the BBC?
2. List the defining characteristics of Tabloids and Broadsheets.





# British Holidays

Identify these British holidays, their dates, and list a few traditions





# British Literature

Who is this writer and why is he significant?



Match these literary characteristics to the era:

1. Old English Literature
2. Renaissance Literature
3. Romanticism Literature
4. 20th Century Literature

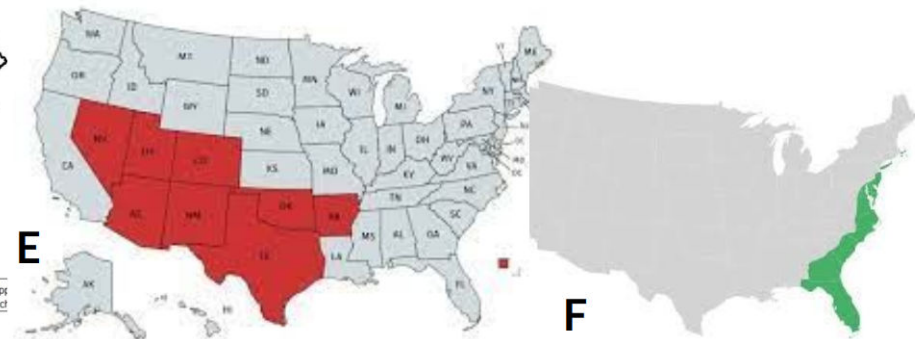
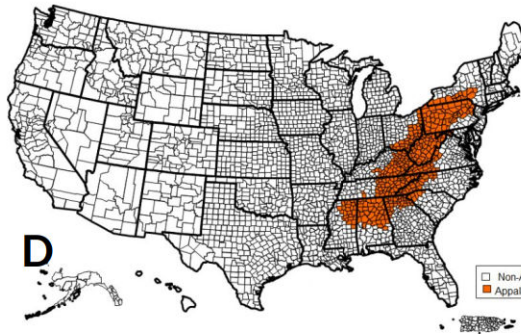
- A. Characteristics from this literature include a sense of alienation from society and a loss of optimism about the future.
- B. Artistic, emotional, and intellectual literature focused on nature and environment.
- C. Mostly anonymous writers and only 400 surviving manuscripts.
- D. The era in which William Shakespeare produced his work.

# US Regions



Label these regions of the US

1. The Atlantic Coast Region
2. The New England Region
3. The Appalachian Region
4. The Midwest/ Interior Lowlands and Plains
5. The Rocky Mountain Region
6. The Southwest Region
7. The Pacific Coast Region
8. The Pacific Islands





# US Regions

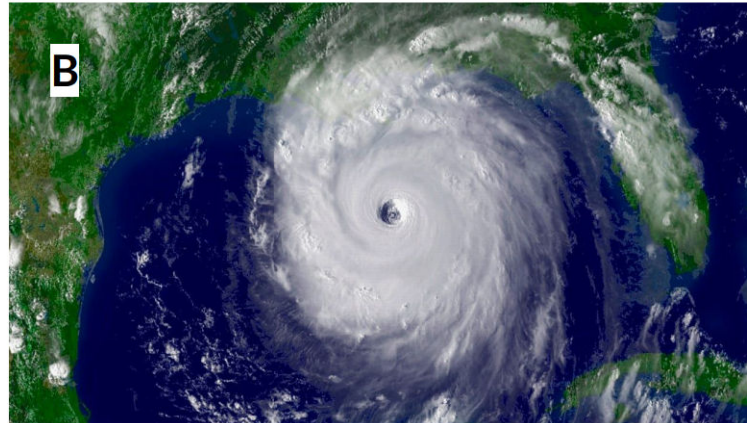
List a few characteristics of these US regions (ex: landscape, weather, resources, etc.)

1. The Atlantic Coast Region
2. The New England Region
3. The Appalachian Region
4. The Midwest/ Interior Lowlands and Plains
5. The Rocky Mountain Region
6. The Southwest Region
7. The Pacific Coast Region
8. The Pacific Islands



# US Weather Events

What are these weather events and where do they commonly occur in the United States?





# US Natural Resources





Who are these individuals?





# Identify these Landmark Supreme Court Cases



1. Schenck v. United States (1919)
  2. Brown v. Board of Education (1954)
  3. Loving v. Virginia (1967)
  4. Obergefell v. Hodges (2015)
- A. This Supreme Court case legalized marriage between people of two different races.
  - B. This Supreme Court case ruled that there are limits to the First Amendment (free speech) in certain circumstances, such as during wartime.
  - C. This Supreme Court case legalized marriage between same-sex couples.
  - D. This Supreme Court ruled that separating children in public schools on the basis of race was unconstitutional.

# American Constitutional Rights



1. Written in 1787, this historical US document is the “law of the land”  
\_\_\_\_\_.
2. The right to free speech, freedom of the press, freedom of religion, right to assembly, and right to petition the government are all a part of what US amendment? \_\_\_\_\_.
3. This amendment grants US citizens the right to “bear arms” (own a gun)  
\_\_\_\_\_.

# US Religion



1. What are the three most common religions in the United States? \_\_\_\_\_, \_\_\_\_\_, \_\_\_\_\_
2. What is the most common religion in the United States?  
\_\_\_\_\_
3. Between Protestantism and Catholicism, which is the most common Christian religion in America?
4. True or False: Americans with no religious affiliation are increasing.

# US Religion



Describe the history and importance of Black Churches in the United States \_\_\_\_\_

Define the “Separation of Church and State”  
\_\_\_\_\_

What are some values or beliefs of Christian Fundamentalists?  
\_\_\_\_\_

# American Food

---



1. American food diversity is mostly a result of:
  - A. Curiosity
  - B. Convenience
  - C. Immigration
  - D. Imported foods
  
2. What is an example of American cuisine that has been influenced by immigration  
\_\_\_\_\_
  
3. What is something that is typically American, or, “as American as apple pie” ?  
\_\_\_\_\_

# American Marriage



Put these marriage developments in chronological order:

- \_\_\_ A. Informal weddings such as elopement and courthouse weddings become popular due to the high price of weddings.
- \_\_\_ B. Couples of two different races gain the right to legal marriage.
- \_\_\_ C. Marriage is viewed as a formal exchange of property (the bride = property being given to the groom's family).
- \_\_\_ D. Marriage is viewed as a mutual partnership between a couple.
- \_\_\_ E. Same sex couples gain the right to legal marriage.



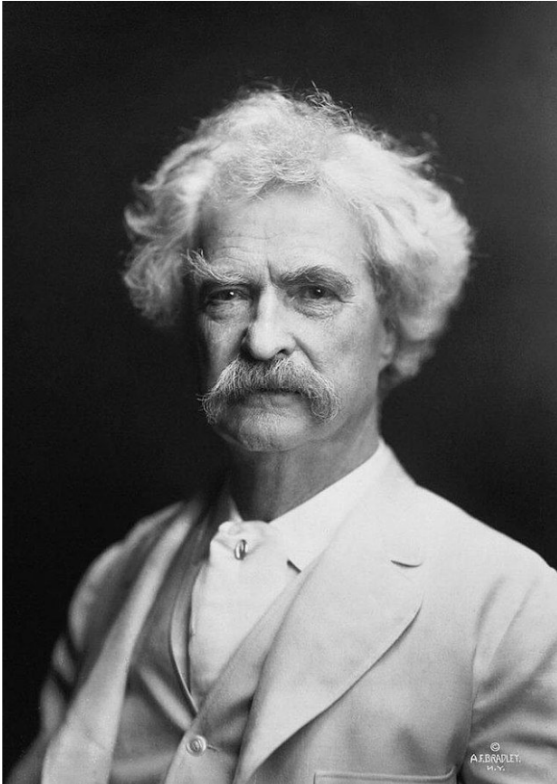
# American Holidays

Identify these American holidays, their dates, and list a few traditions.

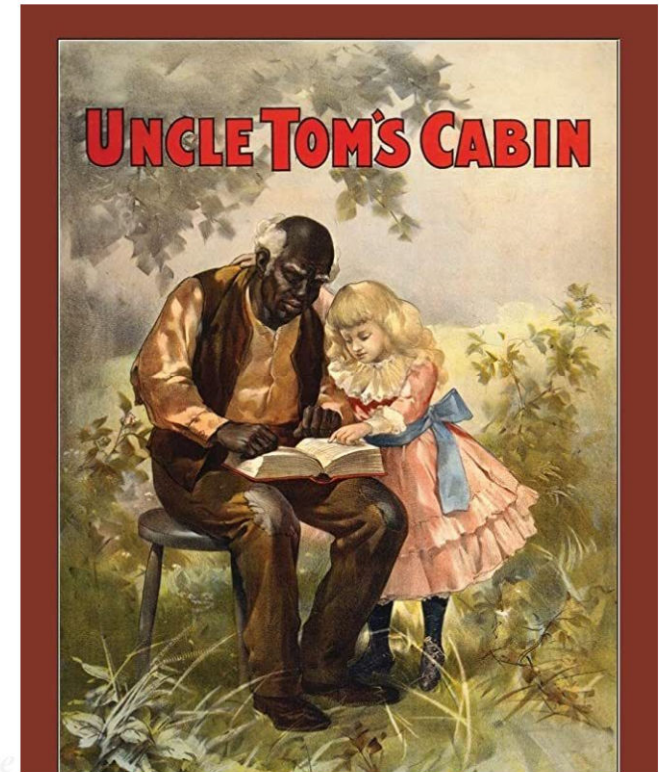


# American Literature

Who is this American author?



Who wrote this American novel?





# American Literature



Match these literary eras with their characteristics:

1. This literary era features writers such as Mark Twain and Harriet Beecher Stowe.
  2. This literary era was inspired by events such as the end of World War II, the Korean War, Vietnam War, the Cold War, and the Civil Rights movement.
  3. This era was nationalistic and anti-British.
  4. This era was influenced by worldwide industrialization, the Great Depression, and the first World War. They often contain non-linear narratives and free-flowing interior monologues that emphasize the experiences of the individual.
- a. Modern Literature
  - b. Early-American Literature
  - c. 19th-Century Literature
  - d. Postmodern Literature

# American Cinema



Put these American cinema developments in chronological order:

- \_\_\_ A. Disney releases the first feature-length animation, *Snow white and the Seven Dwarfs*
- \_\_\_ B. Technicolor film technology replaces black-and-white film
- \_\_\_ C. Hollywood as a center for American film starts to develop
- \_\_\_ D. The first Talkie film, *The Jazz Singer*, is released
- \_\_\_ E. The Blockbuster and classic *Star Wars* is released
- \_\_\_ F. Edison's motion picture *The Black Diamond Express* captivates audiences



# American Performance Culture



Hollywood is known for \_\_\_\_\_ and is located in \_\_\_\_\_.

Broadway is known for \_\_\_\_\_ and is located in \_\_\_\_\_.

To be considered a Broadway performance, a Broadway theater must have \_\_\_\_\_ seats and be located in NYC's \_\_\_\_\_.

# The Smithsonian

---

What is the Smithsonian and why is it significant?



# Answer Key



Slide 2: A. Northern Ireland; B. Scotland; C. England; D. Wales E. English Channel/ Straits of Dover

Slide 3: London; Belfast; Edinburgh; Cardiff

Slide 4: Thames River; Lough Neagh

Slide 5: C.; reliable rainfall throughout the year, mild summers and winters, infrequent snow in the north; The North Atlantic Drift Current deposits warm, moist air to the region.

Slide 6: Wales; Scotland; Ireland

Slide 7: 1. E; 2. A; 3. C; 4. B; 5. D

Slide 8: Rishi Sunak (current PM); King Charles III (current sovereign)

Slide 9: 1. D; 2. T

Slide 10: Common law; Equity law; Common Law

Slide 11: Early years, Primary, Secondary, Further, Higher

# Answer Key



Slide 12: C

Slide 13: PM from 1979-1990 known for economic policies that attempted to cure the “British Disease” through privatizing industries, reducing government spending, deregulation, free-markets, and nationalism; “British Disease” was a period of economic stagnation during the 1970s featuring slow growth and low productivity; A.

Slide 14: Tabloid (left side); Broadsheet (right side)

Slide 15: BBC is the national broadcaster of the UK, the world's oldest national broadcaster, and the largest broadcaster in the world by number of employees. It's purpose is to inform, educate and entertain. Broadsheets are quality, serious-minded print covering topics in-depth (politics, economy, global news, etc.). Tabloids are populist, less-serious media with shallow coverage of popular culture topics.

Slide 16: A. Bonfire Night/Guy Fawkes Day (Nov.5); B. Trooping the Colour (a Saturday in June); C. Hogmanay (Dec. 31st/Jan 1.)

Slide 17: William Shakespeare; 1. C; 2. D; 3. B; 4. A



# Answer Key



Slide 18: 1. F; 2. C; 3.D; 4. H; 5. B; 6. E; 7. A; 8. C

Slide 19: See PPT Part II slides # 4-12 for detail.

Slide 20: A. Wildfire, Pacific Coast and Southwest; B. Hurricane, Atlantic Coast; C. Tornado, Midwest/Interior Plains; D. Drought, Pacific Coast and Southwest

Slide 21: A. Freshwater; B. Coastline; C. Forests; D. Agriculture land; E. Ranch Land; F. Coal, oil, natural gas

Slide 22: Joe Biden (current American President); the Supreme Court Justices

Slide 23: 1. B; 2. D; 3. A; 4. C

Slide 24: 1. United States Constitution; 2. First Amendment; 3. Second Amendment

Slide 25: 1. Christianity; Judaism; Islam; 2. Christianity; 3. Protestantism; 4. True

# Answer Key



Slide 26: See PPT Part II slides #58-60 for detail.

Slide 27: 1. C; 2. Fortune cookies. Several more examples can be found in PPT Part II slides #106-113; 3. Rock and roll music, blue jeans, baseball, etc.

Slide 28: C, D, B, E, A

Slide 29: A. Christmas (Dec. 25); B. Thanksgiving (fourth Thursday in November); C. Veteran's Day (Nov. 11); Easter (4th Sunday in March or April); Halloween (Oct. 31)

Slide 30: Mark Twain; Harriet Beecher Stowe

Slide 31: 1. C; 2. D; 3. B; 4. A

Slide 32: F, D, A, B, C, E

Slide 33: cinema, Los Angeles, California (west coast); theater, New York City (east coast); 500+, Theater District

Slide 34: The Smithsonian is the world's largest education, research, and museum complex. See PPT Part II slides #160-163 for detail.